

Words with a Short /i/ Spelt Using 'y'

Practise your weekly spelling words using cursive handwriting.

myth

gym

Egypt

pyramid

mystery

hymn

system

symbol

lyric

typical

Words with a Short /i/ Spelt Using 'y'

Practise your weekly spelling words using cursive handwriting.

myth

gym

Egypt

pyramid

mystery

hymn

system

symbol

lyric

typical

Words with a Short /i/ Spelt Using 'y'

Practise your weekly spelling words using print handwriting.

myth

gym

Egypt

pyramid

mystery

hymn

system

symbol

lyric

typical

Stick Overlay Sheet Here

Stick Overlay Sheet Here

Stick Overlay Sheet Here

myth

gym

Egypt

pyramid

mystery

hymn

system

symbol

lyric

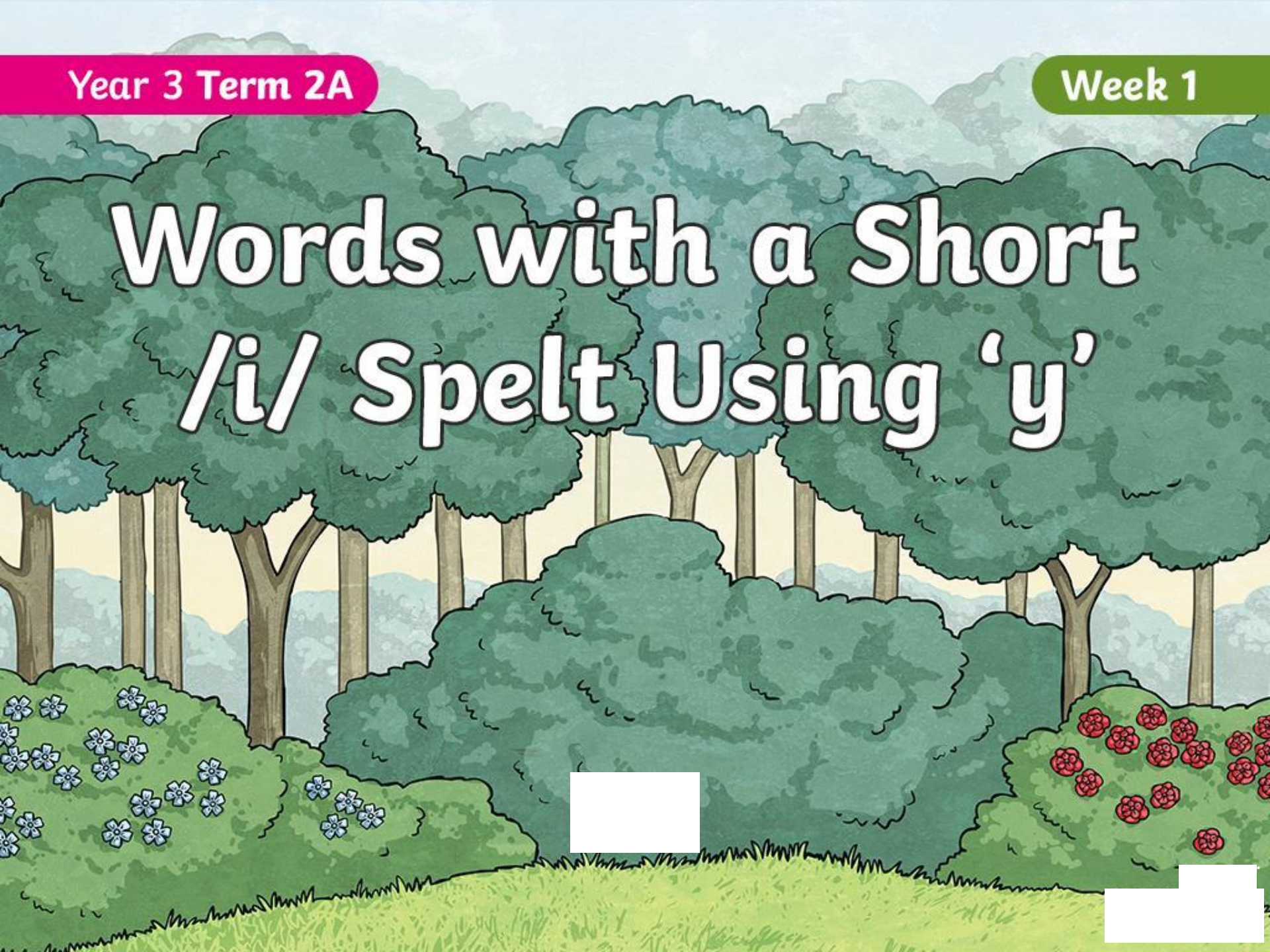
typical

Look

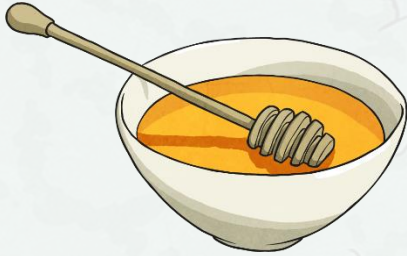
Write

Check

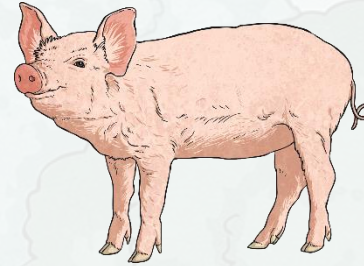
Words with a Short /i/ Spelt Using 'y'



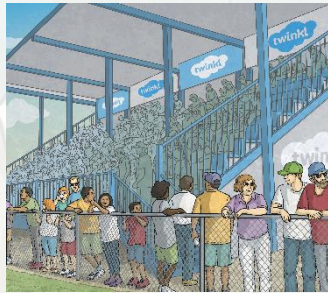
The short /i/ sound can be formed in words using...



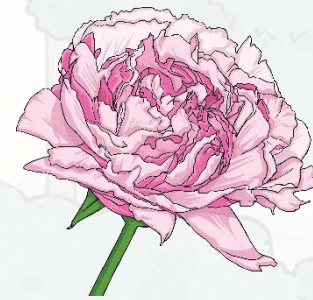
'ey' in honey



'i' as in pig

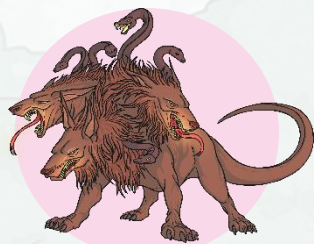


'u' as in busy



'e' as in pretty

But we are looking at another way of making a short /i/ sound...



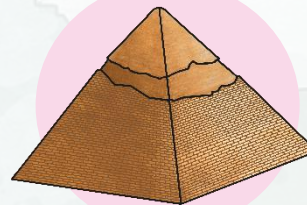
myth



gym



Egypt



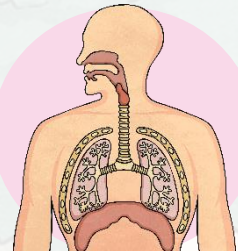
pyramid



mystery



hymn



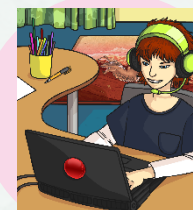
system



symbol



lyric



typical

How has the short /i/ sound been made in these words?

These words contain the 'y' letter pattern making the short /i/ sound.

Here are this week's spellings to practise.

myth

gym

Egypt

pyramid

mystery

hymn

system

symbol

lyric

typical



<p style="text-align: center;">Week 1</p> <p style="text-align: center;">Words with a Short /i/ Spelt Using 'y'</p> <p>math hymn</p> <p>gym system</p> <p>Egypt symbol</p> <p>pyramid lyric</p> <p>mystery typical</p>	<p style="text-align: center;">Week 1</p> <p style="text-align: center;">Words with a Short /i/ Spelt Using 'y'</p> <p>math hymn</p> <p>gym system</p> <p>Egypt symbol</p> <p>pyramid lyric</p> <p>mystery typical</p>	<p style="text-align: center;">Week 1</p> <p style="text-align: center;">Words with a Short /i/ Spelt Using 'y'</p> <p>math hymn</p> <p>gym system</p> <p>Egypt symbol</p> <p>pyramid lyric</p> <p>mystery typical</p>	<p style="text-align: center;">Week 1</p> <p style="text-align: center;">Words with a Short /i/ Spelt Using 'y'</p> <p>math hymn</p> <p>gym system</p> <p>Egypt symbol</p> <p>pyramid lyric</p> <p>mystery typical</p>
<p style="text-align: center;">Week 1</p> <p style="text-align: center;">Words with a Short /i/ Spelt Using 'y'</p> <p>math hymn</p> <p>gym system</p> <p>Egypt symbol</p> <p>pyramid lyric</p> <p>mystery typical</p>	<p style="text-align: center;">Week 1</p> <p style="text-align: center;">Words with a Short /i/ Spelt Using 'y'</p> <p>math hymn</p> <p>gym system</p> <p>Egypt symbol</p> <p>pyramid lyric</p> <p>mystery typical</p>	<p style="text-align: center;">Week 1</p> <p style="text-align: center;">Words with a Short /i/ Spelt Using 'y'</p> <p>math hymn</p> <p>gym system</p> <p>Egypt symbol</p> <p>pyramid lyric</p> <p>mystery typical</p>	<p style="text-align: center;">Week 1</p> <p style="text-align: center;">Words with a Short /i/ Spelt Using 'y'</p> <p>math hymn</p> <p>gym system</p> <p>Egypt symbol</p> <p>pyramid lyric</p> <p>mystery typical</p>

Words with a Short /i/ Spelt Using 'y'

g p a r z d l p t a t g
a b b h i c u e m w x x
y b l y r i c e p m f z
z f v r a e a e m t p s
k y e e b g h t y m y e
t m e t s y s p j m r y
w i t s c o i j b z a a
n c x y e c u o c y m t
y m g m a g l b p x i r
k c e l n g y m a c d q
f d k u n m t p i n z k
z n m y h c n x t m w l

myth
gym
Egypt
pyramid
mystery

hymn
system
symbol
lyric
typical

Words with a Short /i/ Spelt Using 'y' **Answers**

g p a r z d l p t a t g
a b b h i c u e m w x x
y b ~~l~~ ~~y~~ ~~r~~ ~~i~~ ~~e~~ e p m f z
z f v r a e a e m ~~t~~ ~~p~~ ~~s~~
k y e e b g ~~h~~ ~~t~~ ~~y~~ ~~m~~ ~~y~~ e
t ~~m~~ ~~e~~ ~~t~~ ~~s~~ ~~y~~ ~~s~~ p j m r y
w i t s c o i j b z a a
n c x y e e u o c y m t
y m g m a g l b p x i r
k c e ~~l~~ n ~~g~~ ~~y~~ ~~m~~ a c d q
f d k u n m t p i n z k
z ~~n~~ ~~m~~ ~~y~~ ~~h~~ c n x ~~t~~ m w l

myth
gym
Egypt
pyramid
mystery

hymn
system
symbol
lyric
typical

Year 3 Term 2A Overview

Objectives that are in pink are a Y3/Y4 statutory requirement and individual words highlighted pink are from the Y3/Y4 statutory spelling list. The additional sets either: revise previously visited spelling rules from lower year groups; practise a spelling rule linked to a Y3/Y4 statutory spelling word or relate to a word, sentence or punctuation objective from the English Appendix 2 of the NC 2014. Each set of spellings contains 10 words linked to the objective.

Week 1 Words with short /i/ sound spelt with 'y'	Week 2 Adding suffixes beginning with a vowel (er/ed/ing) to words with more than one syllable (unstressed last syllable - DO NOT double the final consonant)	Week 3 Adding suffixes beginning with a vowel (er/ed/en/ing) to words with more than one syllable (stressed last syllable - double the final consonant)	Week 4 Creating negative meanings using prefix mis-	Week 5 Creating negative meanings using prefix dis-	Week 6 Words with a /k/ sound spelt with 'ch'
myth	gardener	forgetting	misspell	dislike	scheme
gym	gardening	forgotten	mislead	disobey	chorus
Egypt	limited	beginning	mistreat	discolour	echo
pyramid	limiting	beginner	misbehave	discover	character
mystery	offering	preferred	mistrust	disappear	ache
hymn	offered	preferring	misprint	dishonest	chaos
system	benefited	occurred	misuse	disallow	stomach
symbol	benefiting	occurring	misplace	disbelieve	chemistry
lyric	focused	forbidden	misheard	disapprove	orchestra
typical	focusing	committed	misread	discontinue	technology

Adding Suffixes Beginning With a Vowel (er/ed/ing) to Words with More Than One Syllable

Practise your weekly spelling words using cursive handwriting.

gardener

gardening

limited

limiting

offered

offering

benefited

benefiting

focused

focusing

Adding Suffixes Beginning With a Vowel (er/ed/ing) to Words with More Than One Syllable

Practise your weekly spelling words using cursive handwriting.

gardener

gardening

limited

limiting

offered

offering

benefited

benefiting

focused

focusing

Adding Suffixes Beginning With a Vowel (er/ed/ing) to Words with More Than One Syllable

Practise your weekly spelling words using print handwriting.

gardener

gardening

limited

limiting

offered

offering

benefited

benefiting

focused

focusing

Stick Overlay Sheet Here

Stick Overlay Sheet Here

Stick Overlay Sheet Here

gardener
gardening
limited
limiting
offered
offering
benefited
benefiting
focused
focusing

Look

Write

Check

Year 3 Term 2A Overview

Objectives that are in pink are a Y3/Y4 statutory requirement and individual words highlighted pink are from the Y3/Y4 statutory spelling list. The additional sets either: revise previously visited spelling rules from lower year groups; practise a spelling rule linked to a Y3/Y4 statutory spelling word or relate to a word, sentence or punctuation objective from the English Appendix 2 of the NC 2014. Each set of spellings contains 10 words linked to the objective.

Week 1 Words with short /i/ sound spelt with 'y'	Week 2 Adding suffixes beginning with a vowel (er/ed/ing) to words with more than one syllable (unstressed last syllable - DO NOT double the final consonant)	Week 3 Adding suffixes beginning with a vowel (er/ed/en/ing) to words with more than one syllable (stressed last syllable - double the final consonant)	Week 4 Creating negative meanings using prefix mis-	Week 5 Creating negative meanings using prefix dis-	Week 6 Words with a /k/ sound spelt with 'ch'
myth gym Egypt pyramid mystery hymn system symbol lyric typical	gardener gardening limited limiting offering offered benefited benefiting focused focusing	forgetting forgotten beginning beginner preferred preferring occurred occurring forbidden committed	misspell mislead mistreat misbehave mistrust misprint misuse misplace misheard misread	dislike disobey discolour discover disappear dishonest disallow disbelieve disapprove discontinue	scheme chorus echo character ache chaos stomach chemistry orchestra technology

Week 2

Adding Suffixes Beginning with a Vowel (er/ed/ing) to Words with More Than One Syllable

gardener offering
gardening benefited
limited benefiting
limiting focused
offered focusing

Week 2

Adding Suffixes Beginning with a Vowel (er/ed/ing) to Words with More Than One Syllable

gardener offering
gardening benefited
limited benefiting
limiting focused
offered focusing

Week 2

Adding Suffixes Beginning with a Vowel (er/ed/ing) to Words with More Than One Syllable

gardener offering
gardening benefited
limited benefiting
limiting focused
offered focusing

Week 2

Adding Suffixes Beginning with a Vowel (er/ed/ing) to Words with More Than One Syllable

gardener offering
gardening benefited
limited benefiting
limiting focused
offered focusing

Week 2

Adding Suffixes Beginning with a Vowel (er/ed/ing) to Words with More Than One Syllable

gardener offering
gardening benefited
limited benefiting
limiting focused
offered focusing

Week 2

Adding Suffixes Beginning with a Vowel (er/ed/ing) to Words with More Than One Syllable

gardener offering
gardening benefited
limited benefiting
limiting focused
offered focusing

Week 2

Adding Suffixes Beginning with a Vowel (er/ed/ing) to Words with More Than One Syllable

gardener offering
gardening benefited
limited benefiting
limiting focused
offered focusing

Week 2

Adding Suffixes Beginning with a Vowel (er/ed/ing) to Words with More Than One Syllable

gardener offering
gardening benefited
limited benefiting
limiting focused
offered focusing

Adding Suffixes Beginning With a Vowel (er/ed/ing) to Words with More Than One Syllable

l b u v y n s m b y s y a v x
 w e o o g m k z e c j v c y s
 v n f w y e s y n y s g f q l
 i e f g g a r d e n i n g y d
 k f e a g v z v f v s d a k f
 u i r r q c b o i q e d r v o
 l t e d u e k o t t e f e t c
 i e d e l y y x i t o o d w u
 m d i n r e w i n d f c m v s
 i o m e c k f m g l f u t p i
 t g e r l e f p a z e s f x n
 i h p j n l d b k c r e q m g
 n m w e z d z n e b i d e z t
 g l b a n i b u m x n e k n t
 l i m i t e d e h u g k r d y

gardener

limiting

benefited

focusing

gardening

offered

benefiting

limited

offering

focused



Adding Suffixes Beginning With a Vowel (er/ed/ing) to Words with More Than One Syllable Answers

l	b	u	v	y	n	s	m	b	y	s	y	a	v	x
w	e	o	o	g	m	k	z	e	c	j	v	c	y	s
v	n	f	w	y	e	s	y	n	y	s	g	f	q	l
i	e	f	g	g	a	r	d	e	n	i	n	g	y	d
k	f	e	a	g	v	z	v	f	v	s	d	a	k	f
u	r	r	q	c	b	o	l	q	e	d	r	v	o	
l	t	e	d	u	e	k	o	t	t	e	f	e	t	c
l	e	d	e	l	y	y	x	l	t	o	o	d	w	u
m	d	i	n	r	e	w	i	n	d	f	c	m	v	s
l	o	m	e	c	k	f	m	g	l	f	u	t	p	l
t	g	e	r	l	e	f	p	a	z	e	s	f	x	n
l	h	p	j	n	l	d	b	k	c	r	e	q	m	g
n	m	w	e	z	d	z	n	e	b	l	d	e	z	t
g	l	b	a	n	i	b	u	m	x	n	e	k	n	t
t	i	m	i	t	e	d	e	h	u	g	k	r	d	y

gardener	limiting	benefited	focusing
gardening	offered	benefiting	
limited	offering	focused	

**Adding Suffixes Beginning with a Vowel (ed/er/ing)
to Words with More Than One Syllable
(Not Doubling the Final Consonant)**



What do you notice about these pairs of words?



gardening



focus
d



offering

This week we are adding suffixes beginning with a vowel to words with more than one syllable...

gardener

limited

focused

gardening

limiting

offered

benefited

focusing

offering

benefiting

What do these words have in common?

How many syllables do the root words have?

What do the suffixes begin with?

Is there any change to the root word?

All of these words have what is called an 'unstressed' last syllable. Unstressed syllables are pronounced slightly quieter and at a slightly lower pitch than stressed syllables.

GAR/den

BEN/e/fit

OFF/er

FO/cus

LIM/it

Root words like this do not change when a vowel suffix is added (this rule changes when the last syllable is stressed).



Here are this week's spellings to practise.

gardener

gardening

limited

limiting

offered

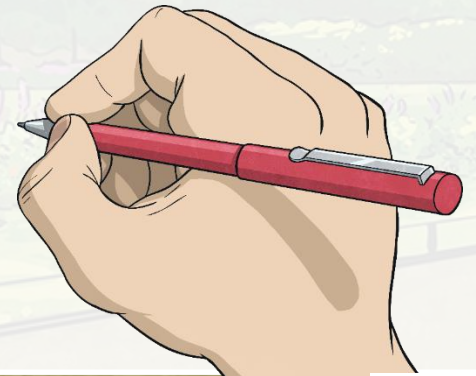
offering

benefited

benefiting

focused

focusing





Adding Suffixes Beginning with a Vowel (ed/er/en/ing) to Words with More than One Syllable

Practise your weekly spelling words using cursive handwriting.

forgetting

forgotten

beginning

beginner

preferring

preferred

occurring

occurred

forbidden

committed

Adding Suffixes Beginning with a Vowel (ed/er/en/ing) to Words with More than One Syllable

Practise your weekly spelling words using cursive handwriting.

forgetting

forgotten

beginning

beginner

preferring

preferred

occurring

occurred

forbidden

committed

Adding Suffixes Beginning with a Vowel (ed/er/en/ing) to Words with More than One Syllable

Practise your weekly spelling words using print handwriting.

forgetting

forgotten

beginning

beginner

preferring

preferred

occurring

occurred

forbidden

committed

Stick Overlay Sheet Here

Stick Overlay Sheet Here

Stick Overlay Sheet Here

forgetting

forgotten

beginning

beginner

preferring

preferred

occurring

occurred

forbidden

committed

Look

Write

Check

<p style="text-align: center;">Week 3</p> <p>Adding Suffixes Beginning with a Vowel (ed/er/en/ing) to Words with More than One Syllable</p> <p>forgetting preferred</p> <p>forgotten occurring</p> <p>beginning occurred</p> <p>beginner forbidden</p> <p>preferring committed</p>	<p style="text-align: center;">Week 3</p> <p>Adding Suffixes Beginning with a Vowel (ed/er/en/ing) to Words with More than One Syllable</p> <p>forgetting preferred</p> <p>forgotten occurring</p> <p>beginning occurred</p> <p>beginner forbidden</p> <p>preferring committed</p>	<p style="text-align: center;">Week 3</p> <p>Adding Suffixes Beginning with a Vowel (ed/er/en/ing) to Words with More than One Syllable</p> <p>forgetting preferred</p> <p>forgotten occurring</p> <p>beginning occurred</p> <p>beginner forbidden</p> <p>preferring committed</p>	<p style="text-align: center;">Week 3</p> <p>Adding Suffixes Beginning with a Vowel (ed/er/en/ing) to Words with More than One Syllable</p> <p>forgetting preferred</p> <p>forgotten occurring</p> <p>beginning occurred</p> <p>beginner forbidden</p> <p>preferring committed</p>
<p style="text-align: center;">Week 3</p> <p>Adding Suffixes Beginning with a Vowel (ed/er/en/ing) to Words with More than One Syllable</p> <p>forgetting preferred</p> <p>forgotten occurring</p> <p>beginning occurred</p> <p>beginner forbidden</p> <p>preferring committed</p>	<p style="text-align: center;">Week 3</p> <p>Adding Suffixes Beginning with a Vowel (ed/er/en/ing) to Words with More than One Syllable</p> <p>forgetting preferred</p> <p>forgotten occurring</p> <p>beginning occurred</p> <p>beginner forbidden</p> <p>preferring committed</p>	<p style="text-align: center;">Week 3</p> <p>Adding Suffixes Beginning with a Vowel (ed/er/en/ing) to Words with More than One Syllable</p> <p>forgetting preferred</p> <p>forgotten occurring</p> <p>beginning occurred</p> <p>beginner forbidden</p> <p>preferring committed</p>	<p style="text-align: center;">Week 3</p> <p>Adding Suffixes Beginning with a Vowel (ed/er/en/ing) to Words with More than One Syllable</p> <p>forgetting preferred</p> <p>forgotten occurring</p> <p>beginning occurred</p> <p>beginner forbidden</p> <p>preferring committed</p>

Adding Suffixes Beginning with a Vowel (ed/er/en/ing) to Words with More than One Syllable

i f g u z x u b d c k u n o o
k q c w k m x f e c e h g d s
q b e g i t n u r g e p n f p
g n i r r e f e r p i x i m w
g q y w f h d n e n n n n y h
n t h t s y e z f h e b n a y
i f g b f l r f e e t d i e x
t l n l o p r k r e t e g n r
t m i n r d u f p r o t e y t
e p r v b s c c q z g t b g v
g l r m i m c s o i r i y e o
r a u x d r o j p g o m k o o
o o c m d u d p s l f m l r e
f b c e e s m h v k q o q c n
k q o y n v k a c x s c x i e

forgetting

beginner

occurring

committed

forgotten

preferring

occurred

beginning

preferred

forbidden

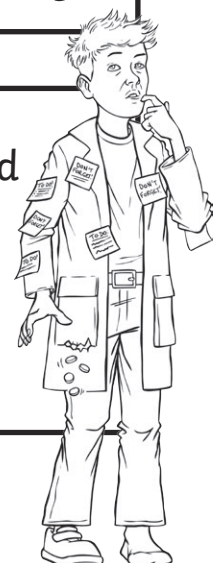


Adding Suffixes Beginning with a Vowel (ed/er/en/ing) to Words with More than One Syllable

-Answers

i	f	g	u	z	x	u	b	d	c	k	u	n	o	o
k	q	c	w	k	m	x	f	e	c	e	h	g	d	s
q	b	e	g	i	t	n	u	r	g	e	p	n	f	p
g	n	i	r	r	e	f	e	r	p	i	x	i	m	w
g	q	y	w	f	h	d	n	e	n	n	n	n	y	h
n	t	h	t	s	y	e	z	f	h	e	b	n	a	y
i	f	g	b	f	l	r	f	e	e	t	d	i	e	x
t	l	n	l	o	p	r	k	r	e	t	e	g	n	r
t	m	i	n	r	d	u	f	p	r	o	t	e	y	t
e	p	r	v	b	s	c	c	q	z	g	t	b	g	v
g	l	r	m	i	m	c	s	o	i	r	i	y	e	o
r	a	u	x	d	r	o	j	p	g	o	m	k	o	o
o	o	c	m	d	u	d	p	s	l	f	m	l	r	e
f	b	c	e	e	s	m	h	v	k	q	o	q	c	n
k	q	o	y	n	v	k	a	c	x	s	c	x	i	e

forgetting	beginner	occurring	committed
forgotten	preferring	occurred	
beginning	preferred	forbidden	



Year 3 Term 2A Overview

Objectives that are in pink are a Y3/Y4 statutory requirement and individual words highlighted pink are from the Y3/Y4 statutory spelling list. The additional sets either: revise previously visited spelling rules from lower year groups; practise a spelling rule linked to a Y3/Y4 statutory spelling word or relate to a word, sentence or punctuation objective from the English Appendix 2 of the NC 2014. Each set of spellings contains 10 words linked to the objective.

Week 1 Words with short /i/ sound spelt with 'y'	Week 2 Adding suffixes beginning with a vowel (er/ed/ing) to words with more than one syllable (unstressed last syllable - DO NOT double the final consonant)	Week 3 Adding suffixes beginning with a vowel (er/ed/en/ing) to words with more than one syllable (stressed last syllable - double the final consonant)	Week 4 Creating negative meanings using prefix mis-	Week 5 Creating negative meanings using prefix dis-	Week 6 Words with a /k/ sound spelt with 'ch'
myth gym Egypt pyramid mystery hymn system symbol lyric typical	gardener gardening limited limiting offering offered benefited benefiting focused focusing	forgetting forgotten beginning beginner preferred preferring occurred occurring forbidden committed	misspell mislead mistreat misbehave mistrust misprint misuse misplace misheard misread	dislike disobey discolour discover disappear dishonest disallow disbelieve disapprove discontinue	scheme chorus echo character ache chaos stomach chemistry orchestra technology

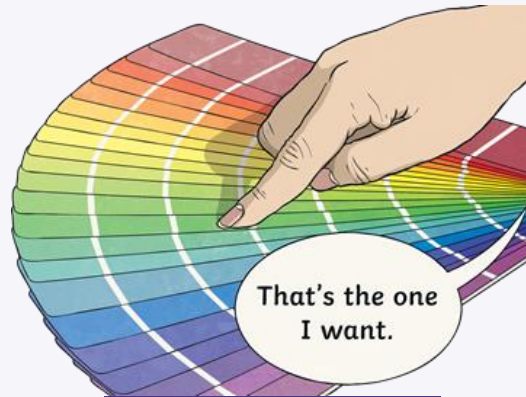
**Adding Suffixes
Beginning with a
Vowel (ed/er/en/ing)
to Words with More
than One Syllable
(stressed last syllable –
double the final consonant)**



What do you notice about these words?



forgetting



preferring



forbidden

This week we are adding suffixes beginning with a vowel to words with more than one syllable, where the final consonant is *stressed*...



forgetting



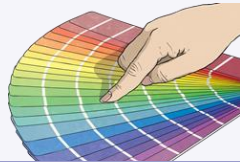
forgotten



beginning



preferring



preferred



beginner



occurring



occurred



forbidden



committed

What do these words have in common?

How many syllables do the root words have?

Which syllable do you stress when reading the root word?

Is there any change to the root word?

How do the root words change when the vowel suffixes are added?

forgetting

preferred

comitted

forgotten

preferring

beginning

occurred

forbidden

beginner

occurring

In root words like this, where the last syllable is stressed, you need to double the final consonant of the word before adding the suffix.



Here are this week's spellings to practise.

forgetting

forgotten

beginning

beginner

preferring

preferred

occurring

occurred

forbidden

committed



Words with the Prefix mis-

Practise your weekly spelling words using cursive handwriting.

misspell

mislead

mistreat

misbehave

mistrust

misprint

misuse

misplace

misheard

misread

Words with the Prefix mis-

Practise your weekly spelling words using cursive handwriting.

misspell

mislead

mistreat

misbehave

mistrust

misprint

misuse

misplace

misheard

misread

Words with the Prefix mis-

Practise your weekly spelling words using print handwriting.

misspell

mislead

mistreat

misbehave

mistrust

misprint

misuse

misplace

misheard

misread

Stick Overlay Sheet Here

Stick Overlay Sheet Here

Stick Overlay Sheet Here

misspell

mislead

mistreat

misbehave

mistrust

misprint

misuse

misplace

misheard

misread

Look
Say
Cover

Write

Check

Week 4

Words with the Prefix mis-

misspell misprint

mislead misuse

mistreat misplace

misbehave misheard

mistrust misread

Week 4

Words with the Prefix mis-

misspell misprint

mislead misuse

mistreat misplace

misbehave misheard

mistrust misread

Week 4

Words with the Prefix mis-

misspell misprint

mislead misuse

mistreat misplace

misbehave misheard

mistrust misread

Week 4

Words with the Prefix mis-

misspell misprint

mislead misuse

mistreat misplace

misbehave misheard

mistrust misread

Week 4

Words with the Prefix mis-

misspell misprint

mislead misuse

mistreat misplace

misbehave misheard

mistrust misread

Week 4

Words with the Prefix mis-

misspell misprint

mislead misuse

mistreat misplace

misbehave misheard

mistrust misread

Week 4

Words with the Prefix mis-

misspell misprint

mislead misuse

mistreat misplace

misbehave misheard

mistrust misread

Week 4

Words with the Prefix mis-

misspell misprint

mislead misuse

mistreat misplace

misbehave misheard

mistrust misread

Words with the Prefix mis-

h v w q k b d t y m h n d a r
n u x m y o v j j a a t r c z
m r g j i e m i s t r u s t c
i j h m z s w u o m j x s a a
s q z i n s b e t d k z t u m
l l b s s u w e v q w e p m g
e e d s x m j f h k c w e u n
a m g p j m o y j a o h u d n
d i j e k a j o l e v m w w x
j s v l w d l p b x i e z i p
i t a l m i s h e a r d d t o
c r j n h i f d m i s u s e w
b e c u m x v t j b p w q e k
q a d k j o m i s p r i n t w
w t m z b j m i s r e a d v x

misspell

misbehave

misuse

misread

mislead

mistrust

misplace

mistreat

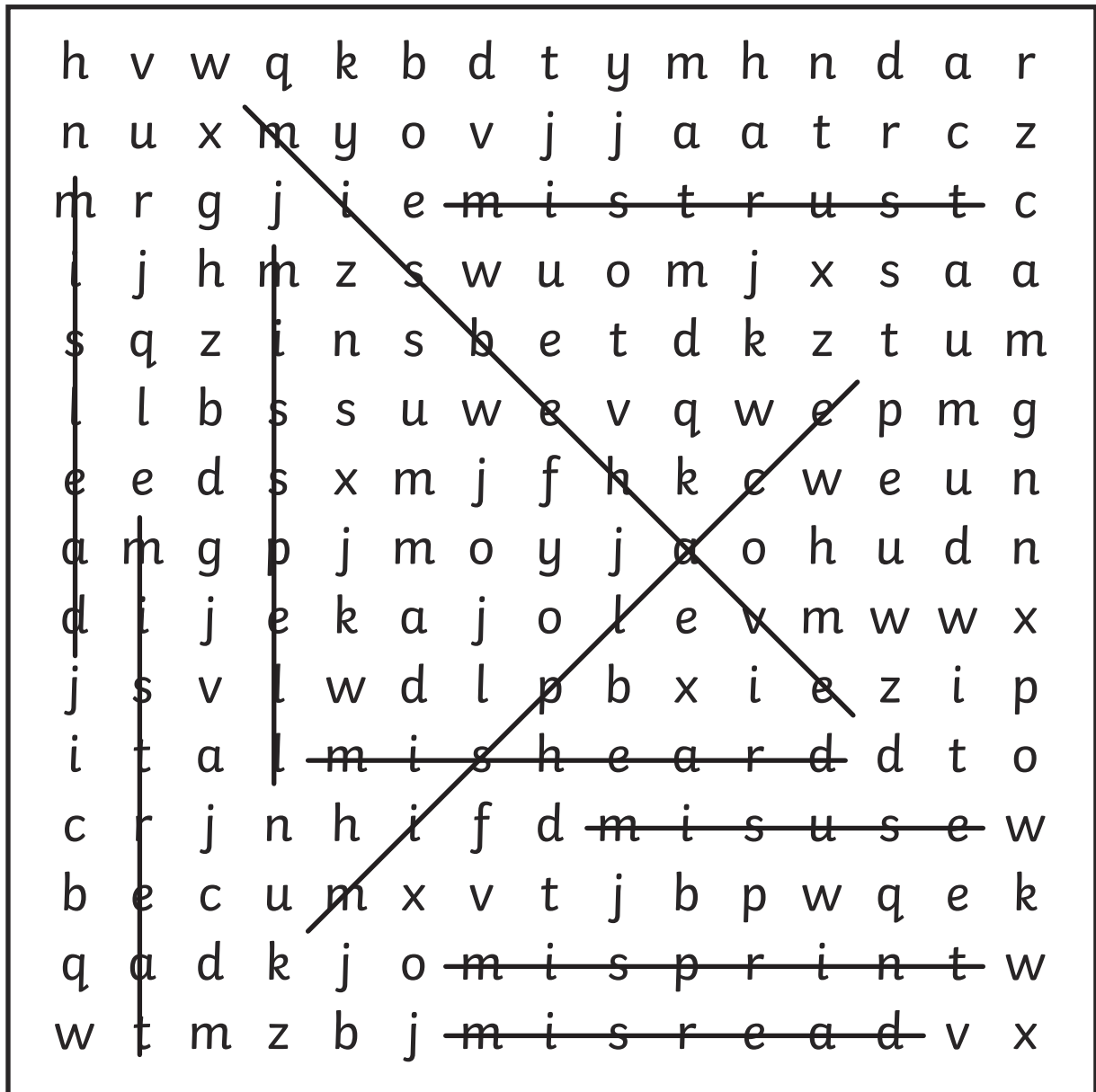
misprint

misheard



Words with the Prefix mis-

Answers



- | | | | |
|----------|-----------|----------|---------|
| misspell | misbehave | misuse | misread |
| mislead | mistrust | misplace | |
| mistreat | misprint | misheard | |

Year 3 Term 2A Overview

Objectives that are in **pink** are a Y3/Y4 statutory requirement and individual words highlighted **pink** are from the Y3/Y4 statutory spelling list. The additional sets either: revise previously visited spelling rules from lower year groups; practise a spelling rule linked to a Y3/Y4 statutory spelling word or relate to a word, sentence or punctuation objective from the English Appendix 2 of the NC 2014. Each set of spellings contains 10 words linked to the objective.

Week 1 Words with short /i/ sound spelt with 'y'	Week 2 Adding suffixes beginning with a vowel (er/ed/ing) to words with more than one syllable (unstressed last syllable - DO NOT double the final consonant)	Week 3 Adding suffixes beginning with a vowel (er/ed/en/ing) to words with more than one syllable (stressed last syllable - double the final consonant)	Week 4 Creating negative meanings using prefix mis-	Week 5 Creating negative meanings using prefix dis-	Week 6 Words with a /k/ sound spelt with 'ch'
myth gym Egypt pyramid mystery hymn system symbol lyric typical	gardener gardening limited limiting offering offered benefited benefiting focused focusing	forgetting forgotten beginning beginner preferred preferring occurred occurring forbidden committed	misspell mislead mistreat misbehave mistrust misprint misuse misplace mis heard misread	dislike disobey discolour discover disappear dishonest disallow dis believe disapprove discontinue	scheme chorus echo character ache chaos stomach chemistry orchestra technology

Words with the Prefix mis-



What do you notice about these words?



misbehave



misplace



misheard

This week we are looking at words which all start with the same prefix...

misspell

mislead

mistreat

misbehave

mistrust

misprint

misuse

misplace

misheard

misread

Which prefix do these words all have in common?

What does that prefix do to the meaning of the word?

These words start with the prefix *mis-*

mis- means 'wrong' or 'incorrectly'

Here are this week's spellings to practise.

misspell

mislead

mistreat

misbehave

mistrust

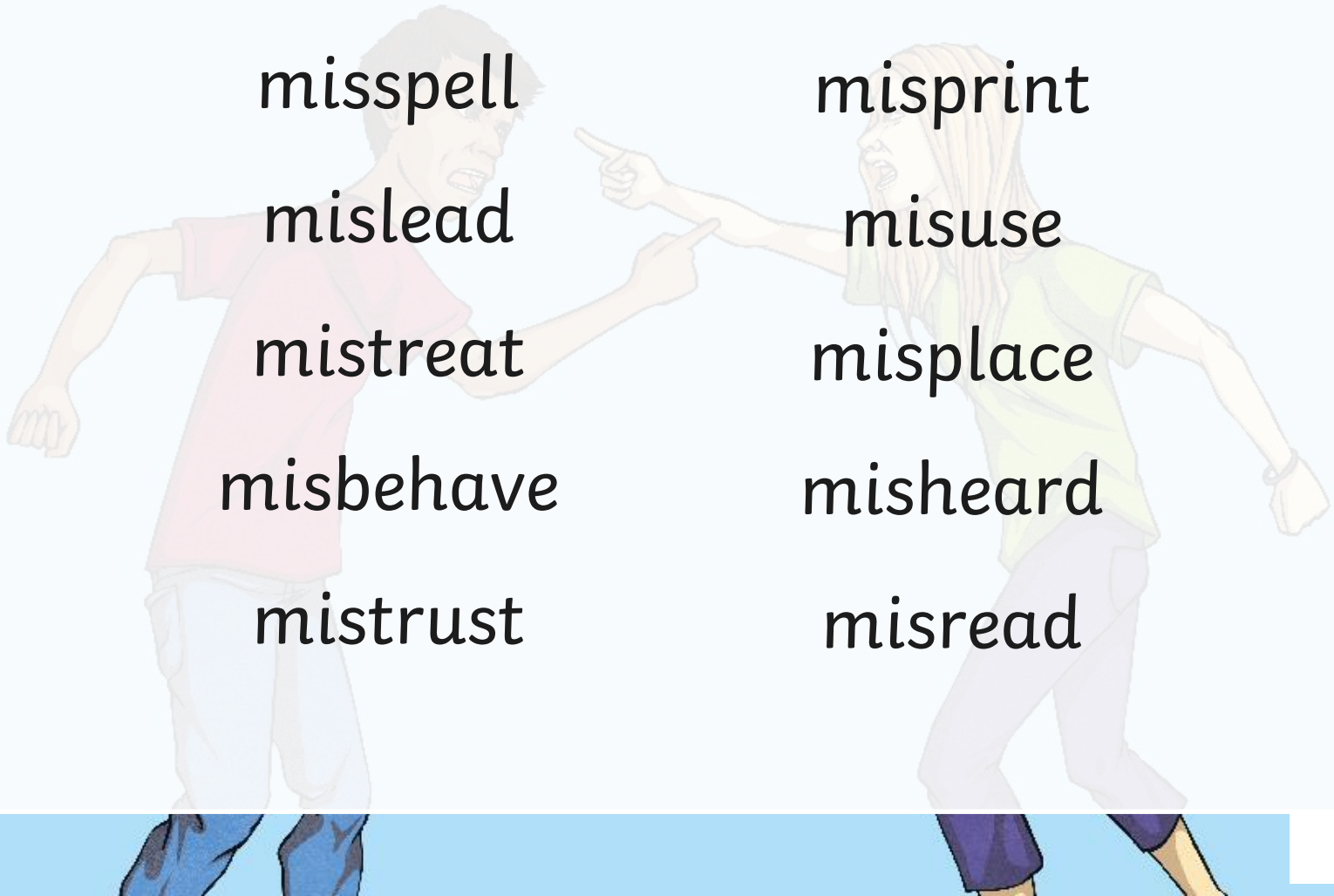
misprint

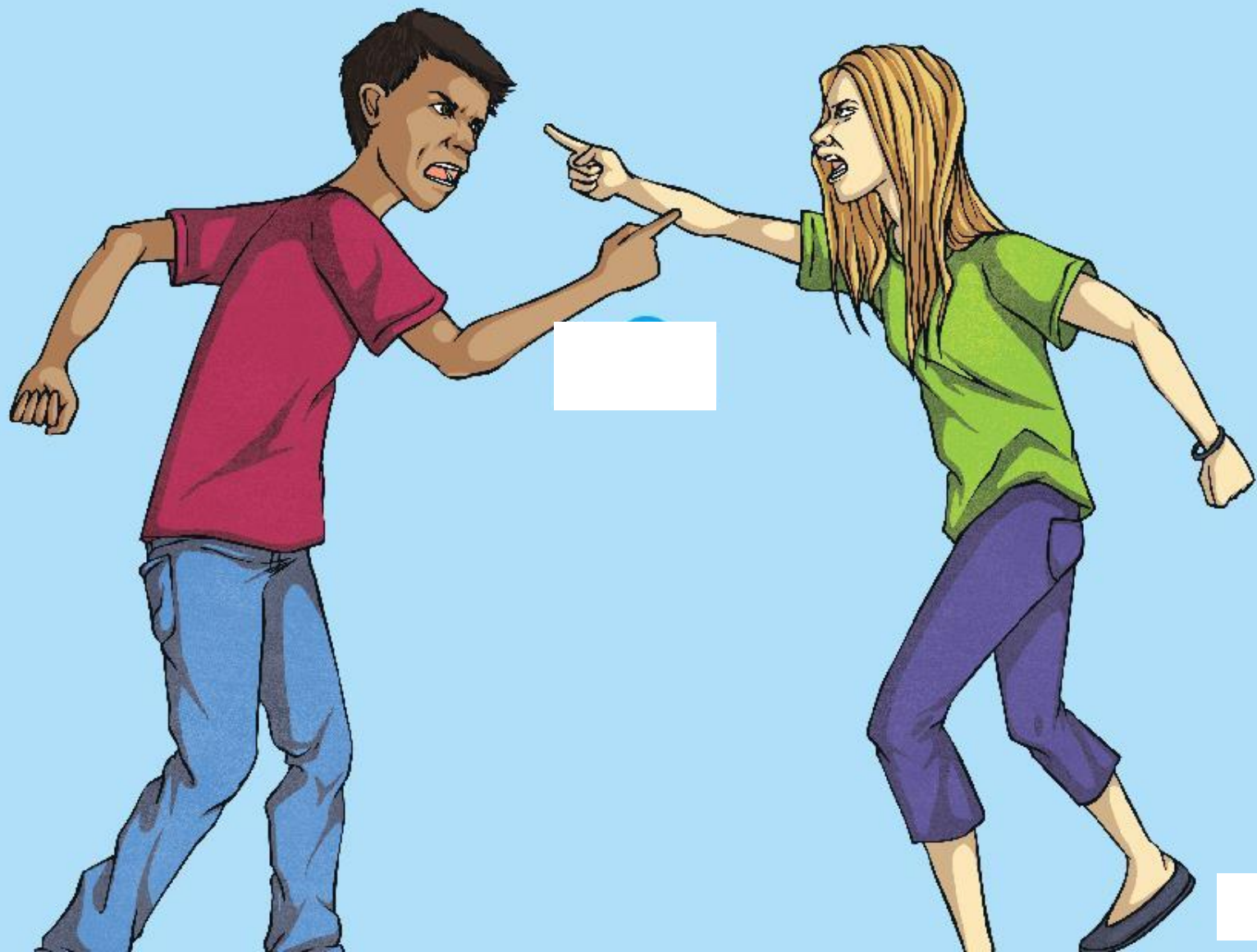
misuse

misplace

misheard

misread





Creating Negative Meanings Using Prefix Dis-

Practise your weekly spelling words using cursive handwriting.

dislike

disobey

discolour

discover

disappear

dishonest

disallow

disbelieve

disapprove

discontinue

Creating Negative Meanings Using Prefix Dis-

Practise your weekly spelling words using cursive handwriting.

dislike

disobey

discolour

discover

disappear

dishonest

disallow

disbelieve

disapprove

discontinue

Creating Negative Meanings Using Prefix Dis-

Practise your weekly spelling words using print handwriting.

dislike

disobey

discolour

discover

disappear

dishonest

disallow

disbelieve

disapprove

discontinue

Stick Overlay Sheet Here

Stick Overlay Sheet Here

Stick Overlay Sheet Here

dislike

disobey

discolour

discover

disappear

dishonest

disallow

disbelieve

disapprove

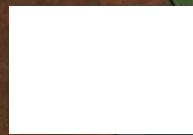
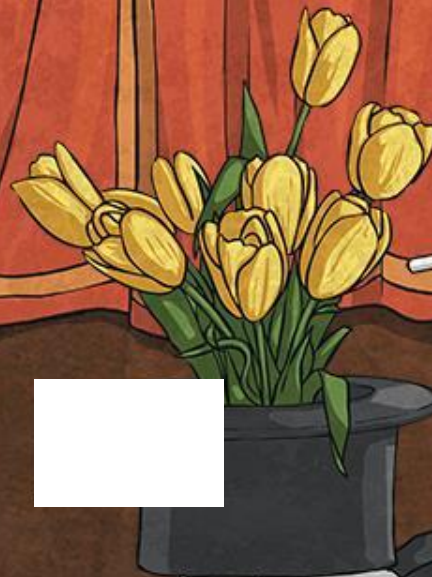
discontinue

Look

Write

Check

Creating Negative Meanings Using Prefix Dis-



What do you notice about these words?



dislike



discover



disappear

This week we are looking at words which all start with the same prefix...

dislike

disobey

discolour

discover

disappear

dishonest

disallow

disbelieve

disapprove

discontinue

Which prefix do these words all have in common?

What does that prefix do to the meaning of the word?

These words start with the prefix dis-
dis- means 'away'.

It changes the meaning of the root word to the
opposite meaning.

Here are this week's spellings to practise.

dislike

disobey

discolour

discover

disappear

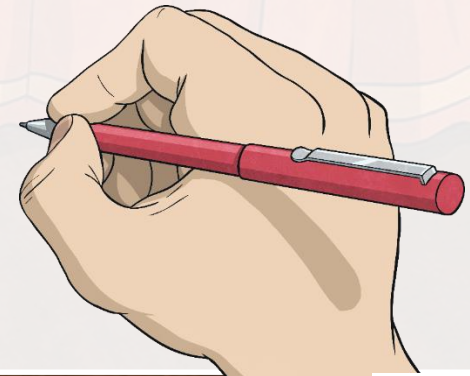
dishonest

disallow

disbelieve

disapprove

discontinue





Week 5

Creating Negative Meanings
Using Prefix Dis-

dislike dishonest

disobey disallow

discolour disbelieve

discover disapprove

disappear discontinue

Week 5

Creating Negative Meanings
Using Prefix Dis-

dislike dishonest

disobey disallow

discolour disbelieve

discover disapprove

disappear discontinue

Week 5

Creating Negative Meanings
Using Prefix Dis-

dislike dishonest

disobey disallow

discolour disbelieve

discover disapprove

disappear discontinue

Week 5

Creating Negative Meanings
Using Prefix Dis-

dislike dishonest

disobey disallow

discolour disbelieve

discover disapprove

disappear discontinue

Week 5

Creating Negative Meanings
Using Prefix Dis-

dislike dishonest

disobey disallow

discolour disbelieve

discover disapprove

disappear discontinue

Week 5

Creating Negative Meanings
Using Prefix Dis-

dislike dishonest

disobey disallow

discolour disbelieve

discover disapprove

disappear discontinue

Week 5

Creating Negative Meanings
Using Prefix Dis-

dislike dishonest

disobey disallow

discolour disbelieve

discover disapprove

disappear discontinue

Week 5

Creating Negative Meanings
Using Prefix Dis-

dislike dishonest

disobey disallow

discolour disbelieve

discover disapprove

disappear discontinue

Creating Negative Meanings Using Prefix Dis-

c r o j e q u j d f d k
a t s e n o h s i d i d
l b d v c s v u s i s s
r r i e m y d d a s c t
r a s i t v e i l c o u
e e a l d m k s l o n o
v p p e l h i o o l t j
o p p b o u l b w o i h
c a r s x z s e u u n f
s s o i c j i y t r u h
i i v d x g d p k e e j
d d e f l q y r p x u o

dislike	disappear	
disobey	dishonest	disapprove
discolour	disallow	discontinue
discover	disbelieve	

Creating Negative Meanings Using Prefix Dis- Answers

c	r	o	j	e	q	u	j	d	f	d	k
a	t	s	e	n	o	h	s	i	d	i	d
l	b	d	v	c	s	v	u	s	i	s	s
r	r	t	e	m	y	d	d	a	s	c	t
r	a	s	i	t	v	e	i	l	c	o	u
e	e	a	l	d	m	k	s	l	o	n	o
v	p	p	e	l	h	i	o	o	l	t	j
o	p	p	b	o	u	l	b	w	o	l	h
c	a	r	s	x	z	s	e	u	u	n	f
s	s	o	i	c	j	i	y	t	r	u	h
i	l	v	d	x	g	d	p	k	e	e	j
d	d	e	f	l	q	y	r	p	x	u	o

dislike	disappear	
disobey	dishonest	disapprove
discolour	disallow	discontinue
discover	disbelieve	

Year 3 Term 2A Overview

Objectives that are in pink are a Y3/Y4 statutory requirement and individual words highlighted pink are from the Y3/Y4 statutory spelling list. The additional sets either: revise previously visited spelling rules from lower year groups; practise a spelling rule linked to a Y3/Y4 statutory spelling word or relate to a word, sentence or punctuation objective from the English Appendix 2 of the NC 2014. Each set of spellings contains 10 words linked to the objective.

Week 1	Week 2	Week 3	Week 4	Week 5	Week 6
Words with short /i/ sound spelt with 'y'	Adding suffixes beginning with a vowel (er/ed/ing) to words with more than one syllable (unstressed last syllable - DO NOT double the final consonant)	Adding suffixes beginning with a vowel (er/ed/en/ing) to words with more than one syllable (stressed last syllable - double the final consonant)	Creating negative meanings using prefix mis-	Creating negative meanings using prefix dis-	Words with a /k/ sound spelt with 'ch'
myth	gardener	forgetting	misspell	dislike	scheme
gym	gardening	forgotten	mislead	disobey	chorus
Egypt	limited	beginning	mistreat	discolour	echo
pyramid	limiting	beginner	misbehave	discover	character
mystery	offering	preferred	mistrust	disappear	ache
hymn	offered	preferring	misprint	dishonest	chaos
system	benefited	occurred	misuse	disallow	stomach
symbol	benefiting	occurring	misplace	disbelieve	chemistry
lyric	focused	forbidden	misheard	disapprove	orchestra
typical	focusing	committed	misread	discontinue	technology

Words with a /k/ Sound Spelt Using 'ch'

Practise your weekly spelling words using cursive handwriting.

scheme

chorus

echo

character

ache

chaos

stomach

chemistry

orchestra

technology

Words with a /k/ Sound Spelt Using 'ch'

Practise your weekly spelling words using cursive handwriting.

scheme

chorus

echo

character

ache

chaos

stomach

chemistry

orchestra

technology

Words with a /k/ Sound Spelt Using 'ch'

Practise your weekly spelling words using print handwriting.

scheme

chorus

echo

character

ache

chaos

stomach

chemistry

orchestra

technology

Stick Overlay Sheet Here

Stick Overlay Sheet Here

Stick Overlay Sheet Here

scheme

chorus

echo

character

ache

chaos

stomach

chemistry

orchestra

technology

Look

Write

Check

<p style="text-align: center;">Week 6</p> <p style="text-align: center;">Words with a /k/ Sound Spelt Using 'ch'</p> <p>scheme chaos</p> <p>chorus stomach</p> <p>echo chemistry</p> <p>character orchestra</p> <p>ache technology</p>	<p style="text-align: center;">Week 6</p> <p style="text-align: center;">Words with a /k/ Sound Spelt Using 'ch'</p> <p>scheme chaos</p> <p>chorus stomach</p> <p>echo chemistry</p> <p>character orchestra</p> <p>ache technology</p>	<p style="text-align: center;">Week 6</p> <p style="text-align: center;">Words with a /k/ Sound Spelt Using 'ch'</p> <p>scheme chaos</p> <p>chorus stomach</p> <p>echo chemistry</p> <p>character orchestra</p> <p>ache technology</p>	<p style="text-align: center;">Week 6</p> <p style="text-align: center;">Words with a /k/ Sound Spelt Using 'ch'</p> <p>scheme chaos</p> <p>chorus stomach</p> <p>echo chemistry</p> <p>character orchestra</p> <p>ache technology</p>
<p style="text-align: center;">Week 6</p> <p style="text-align: center;">Words with a /k/ Sound Spelt Using 'ch'</p> <p>scheme chaos</p> <p>chorus stomach</p> <p>echo chemistry</p> <p>character orchestra</p> <p>ache technology</p>	<p style="text-align: center;">Week 6</p> <p style="text-align: center;">Words with a /k/ Sound Spelt Using 'ch'</p> <p>scheme chaos</p> <p>chorus stomach</p> <p>echo chemistry</p> <p>character orchestra</p> <p>ache technology</p>	<p style="text-align: center;">Week 6</p> <p style="text-align: center;">Words with a /k/ Sound Spelt Using 'ch'</p> <p>scheme chaos</p> <p>chorus stomach</p> <p>echo chemistry</p> <p>character orchestra</p> <p>ache technology</p>	<p style="text-align: center;">Week 6</p> <p style="text-align: center;">Words with a /k/ Sound Spelt Using 'ch'</p> <p>scheme chaos</p> <p>chorus stomach</p> <p>echo chemistry</p> <p>character orchestra</p> <p>ache technology</p>

Words with a /k/ Sound Spelt Using 'ch'

r x j w c h a o s a x t o r h
 q j i a s z y b v i c h y p m
 i c x c p n l y s j c k t y n
 w h j h s n e a e e g h x w y
 a o o e t t e c h n o l o g y
 k r k l k n o y i f k o c s z
 p u c s r r i m s j i r k w l
 z s u c c x x j a c a c e b r
 w m j a d l w q k c h h p e y
 z u w e i c c g w b h e p u d
 c h e m i s t r y a n s m i e
 k q l p t h s j i y h t w e s
 l c h a r a c t e r g r m o u
 s v k o t t q m s r z a g v z
 u r k a x v q x v w z o k l b

scheme

character

stomach

technology

chorus

ache

chemistry

echo

chaos

orchestra



Words with a /k/ Sound Spelt Using 'ch' - Answers

r	x	j	w	e	h	a	o	s	a	x	t	ø	r	h
q	j	i	a	s	z	y	b	v	i	c	h	y	p	m
i	c	x	c	p	n	l	y	s	j	c	k	t	y	n
w	h	j	h	s	n	e	a	e	e	g	h	x	w	y
a	o	o	e	t	t	e	c	h	n	o	l	o	g	y
k	r	k	l	k	n	o	y	i	f	k	o	c	s	z
p	u	c	s	r	r	i	m	s	j	i	r	k	w	l
z	s	u	c	c	x	x	j	a	c	a	c	e	b	r
w	m	j	a	d	l	w	q	k	c	h	h	p	e	y
z	u	w	e	i	c	c	g	w	b	h	e	p	u	d
c	h	e	m	i	s	t	r	y	a	n	s	m	i	e
k	q	l	p	t	h	s	j	i	y	h	t	w	e	s
l	c	h	a	r	a	c	t	e	r	g	r	m	o	u
s	v	k	o	t	t	q	m	s	r	z	a	g	v	z
u	r	k	a	x	v	q	x	v	w	z	o	k	l	b

scheme	character	stomach	technology
chorus	ache	chemistry	
echo	chaos	orchestra	

Year 3 Term 2A Overview

Objectives that are in **pink** are a Y3/Y4 statutory requirement and individual words highlighted **pink** are from the Y3/Y4 statutory spelling list. The additional sets either: revise previously visited spelling rules from lower year groups; practise a spelling rule linked to a Y3/Y4 statutory spelling word or relate to a word, sentence or punctuation objective from the English Appendix 2 of the NC 2014. Each set of spellings contains 10 words linked to the objective.

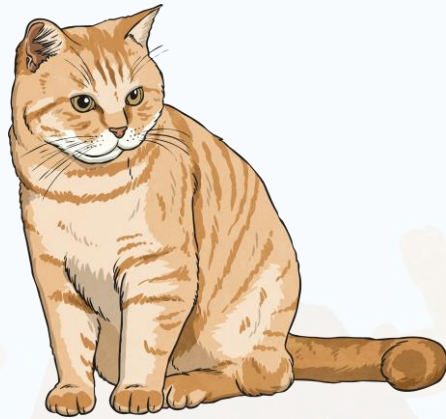
Week 1 Words with short /i/ sound spelt with 'y'	Week 2 Adding suffixes beginning with a vowel (er/ed/ing) to words with more than one syllable (unstressed last syllable - DO NOT double the final consonant)	Week 3 Adding suffixes beginning with a vowel (er/ed/en/ing) to words with more than one syllable (stressed last syllable - double the final consonant)	Week 4 Creating negative meanings using prefix mis-	Week 5 Creating negative meanings using prefix dis-	Week 6 Words with a /k/ sound spelt with 'ch'
myth	gardener	forgetting	misspell	dislike	scheme
gym	gardening	forgotten	mislead	disobey	chorus
Egypt	limited	beginning	mistreat	discolour	echo
pyramid	limiting	beginner	misbehave	discover	character
mystery	offering	preferred	mistrust	disappear	ache
hymn	offered	preferring	misprint	dishonest	chaos
system	benefited	occurred	misuse	disallow	stomach
symbol	benefiting	occurring	misplace	disbelieve	chemistry
lyric	focused	forbidden	misheard	disapprove	orchestra
typical	focusing	committed	misread	discontinue	technology

twinkl.com

Words with a /k/ Sound Spelt Using 'ch'



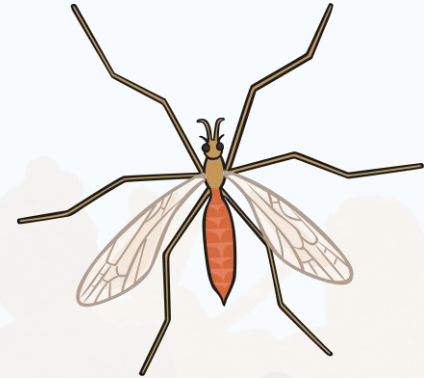
The /k/ sound can be formed in words using...



'c' in **cat**



'ck' as in **packet**



'qu' as in **mosquito**

But we are looking at another way of making a /k/ sound...

scheme

chorus

echo

character

ache

chaos

stomach

chemistry

orchestra

technology

How has the /k/ sound been made in these words?

These words contain the 'ch' letter pattern making the /k/ sound.

Here are this week's spellings to practise.

scheme

chaos

chorus

stomach

echo

chemistry

character

orchestra

ache

technology

